

PCB Power Relay G6QE

Now on sale

Features

Small / High capacity

offering 36A High Switching capacity in a small package

High durability

Contribute to longer life of customer's equipment by approx. 100K times operations. (AC250/30A)

Energy saving

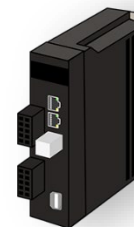
By operating with holding voltage method, Power consumption will be reduced to 12% min.



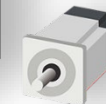
Specification

	G6QE
Size (LWH mm MAX)	30.5 x 16 x 20.5 mm
Electrical Durability	AC250V/30A 100Kops.
	AC250V/32A 50Kops.
	AC250V/36A 10Kops.
Coil consumption	1,400mW @100%
	172mW @35%V

Application



Servo



PV Inverter



Power supply