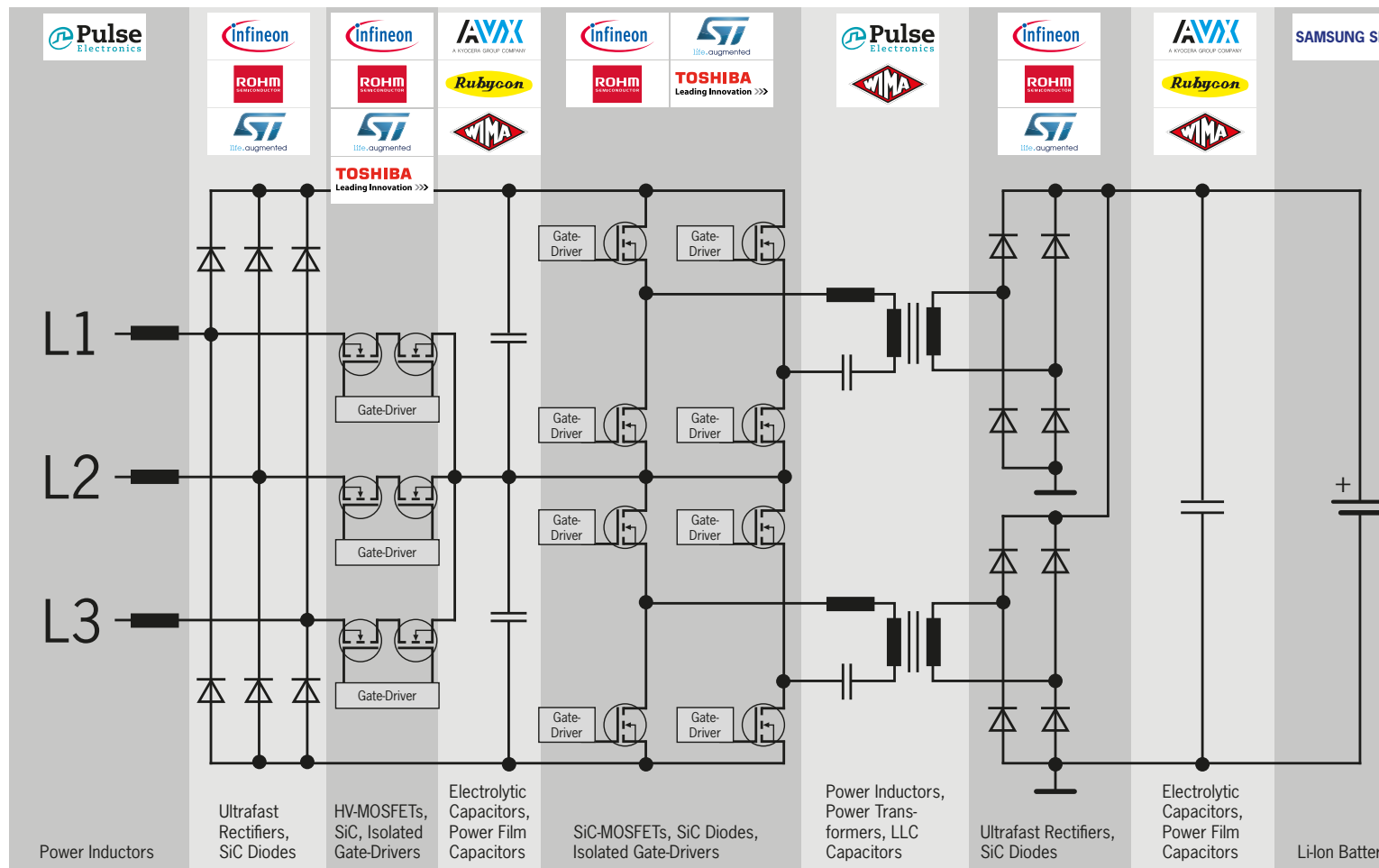




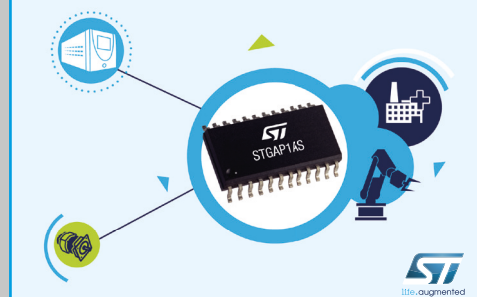
Discover Innovation in Motion

AUTOMOTIVE Products

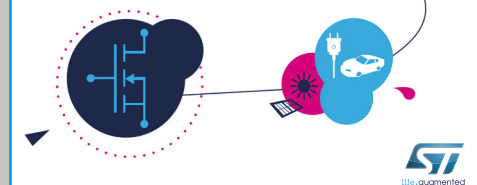
3-Phase EV Charger with Power Factor Control and Vienna Bridge



Automotive-grade SiC diodes



SiC MOSFET



APPLICATIONS: Charger for electric vehicles, on-board chargers

FEATURES: High frequency, high efficiency with SiC semiconductors

BENEFITS: Compact, small volume

Ultrafast Diodes/Rectifiers



| Manufacturer | Series | Description |
|--------------|-------------------|---|
| ROHM | SCSxxx | SiC Schottky Barrier Diodes, 650 V, 1200 V |
| STM | STTHxxx, STPSCxxx | Si FRD and SiC Schottky Diodes, 600 V, 650 V, 750 V, 1200 V |
| Infineon | CoolSiC™ Diode | SiC Schottky Diodes, 650 V, 1200 V |

Power MOSFETs



| Manufacturer | Series | Description |
|--------------|--------------------|---|
| ROHM | SCTxxx | SiC Power MOSFET, 650 V, 1200 V, 1700 V |
| STM | SCTWxxx | SiC Power MOSFET, 650 V, HiP247™ |
| Infineon | CoolMOS™ CPA, CFDA | Si Power MOSFET, 600 V, 650 V |
| Infineon | CoolSiC™ MOSFET | SiC Power MOSFET, 1200 V |

Power Film Capacitors



| Manufacturer | Series | Description |
|--------------|-----------------|--|
| AVX | FHC1, FHC2 | DC-Link capacitor for EV/HEV |
| WIMA | DC-LINK MKP4 | High voltage up to 1500 V, low ESR, long life |
| Vishay | MKP1848 DC-Link | High voltage up to 1200 V, low ESR, high current |
| Vishay | MKT1820 | High voltage up to 1000 V, 125 °C |

Electrolytic Capacitors



| Manufacturer | Series | Description |
|--------------|-----------|---|
| Rubycon | VXG / HFG | Miniaturized Long Life / 4-pin snap-in, Long Life |



LLC Resonant Capacitors



| Manufacturer | Series | Description |
|--------------|-------------|---|
| WIMA | MKP10, FKP1 | Low ESR Polypropylene for high voltage AC/Pulse operation |
| Vishay | MKP385 | For AC & Pulse, metallized Polypropylene |

Isolated Gate Drivers



| Manufacturer | Series | Description |
|--------------|-------------|--|
| ROHM | BM61xxx | Single channel isolated gate driver |
| STM | STGAP1S | Single channel isolated gate driver |
| Infineon | EiceDriver™ | Single & dual channel isolated gate drivers |
| Toshiba | TB9150 | Single channel IGBT pre-driver with flyback controller |

Power Inductors and Transformers



| Manufacturer | Series | Description |
|--------------|------------------------------|---|
| Pulse | PH9363NL, PH9496NL, PH0416NL | High isolation fly-back transformers for gate drivers |
| Pulse | PA434x, PA45x | Molded power inductors |
| Pulse | PH9500NL, PA1005QNL | SMD current sense transformers |
| Pulse | Custom designed | DC/DC and LLC transformers, up to 10 kV isolation |

Li-Ion Battery



| Manufacturer | Series | Description |
|--------------|-------------|--|
| Samsung-SDI | Shape 18650 | Li-Ion chemistry, world leading manufacturer, capacity up to 3.5 Ah per cell |

